

# eTrace pilot Sweden

EPCIS as a tool for food supply chain traceability

May 2010

# The team

- eTtrace
- University of Lund
- Board of Fisheries Sweden
- Some fishermen in Simrishamn
- Skillinge FiskImpex Simrishamn
- Hanssons Gothenburg
- Fiskelyckan Gothenburg

# How

- RFID to EPCIS
- Manual, labels and handheld readers
- 5 days



# From boat



# Into production



# Filé into cardboard boxes





# Distributor

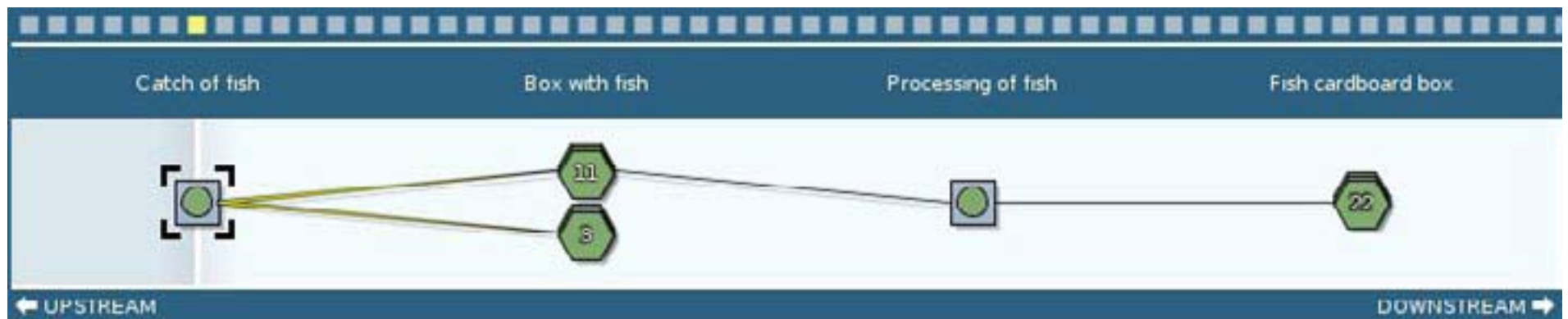


# To retailer

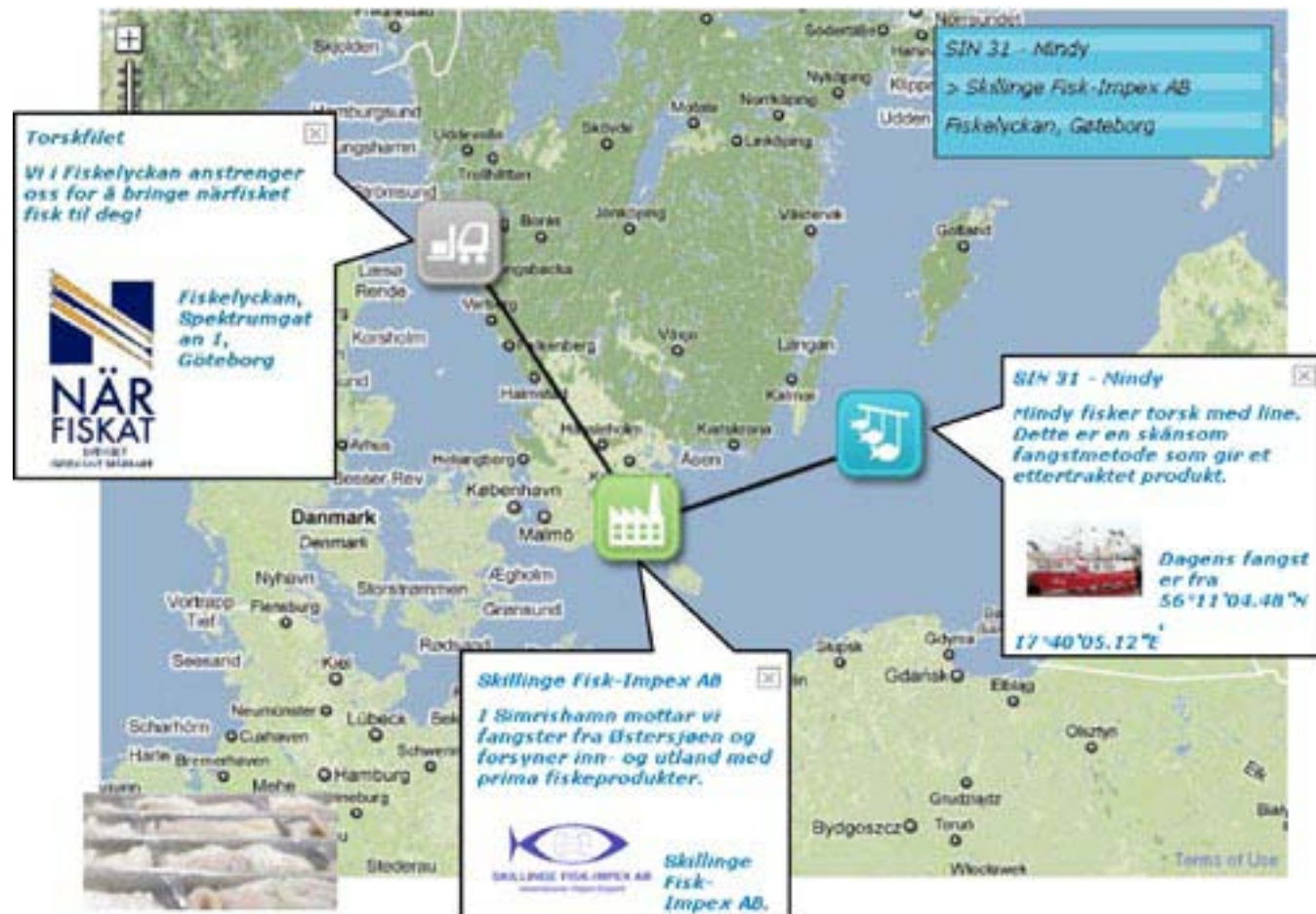




# Presentation in EPCIS



# To consumer



# Consumer satisfaction

